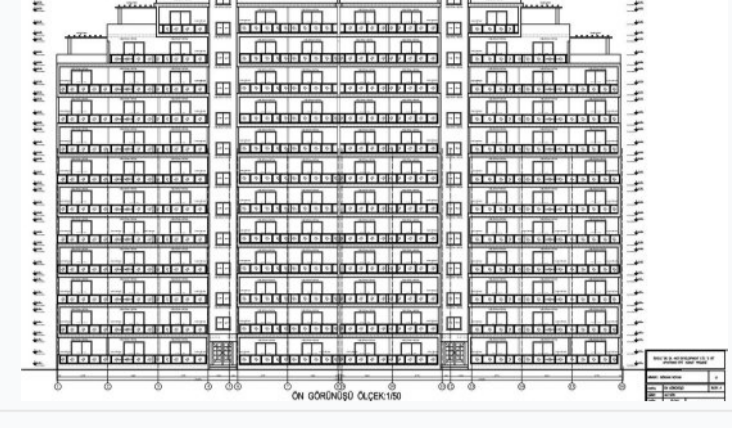
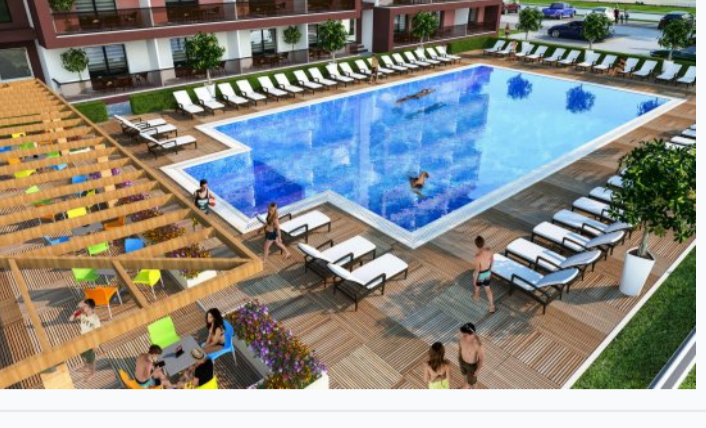
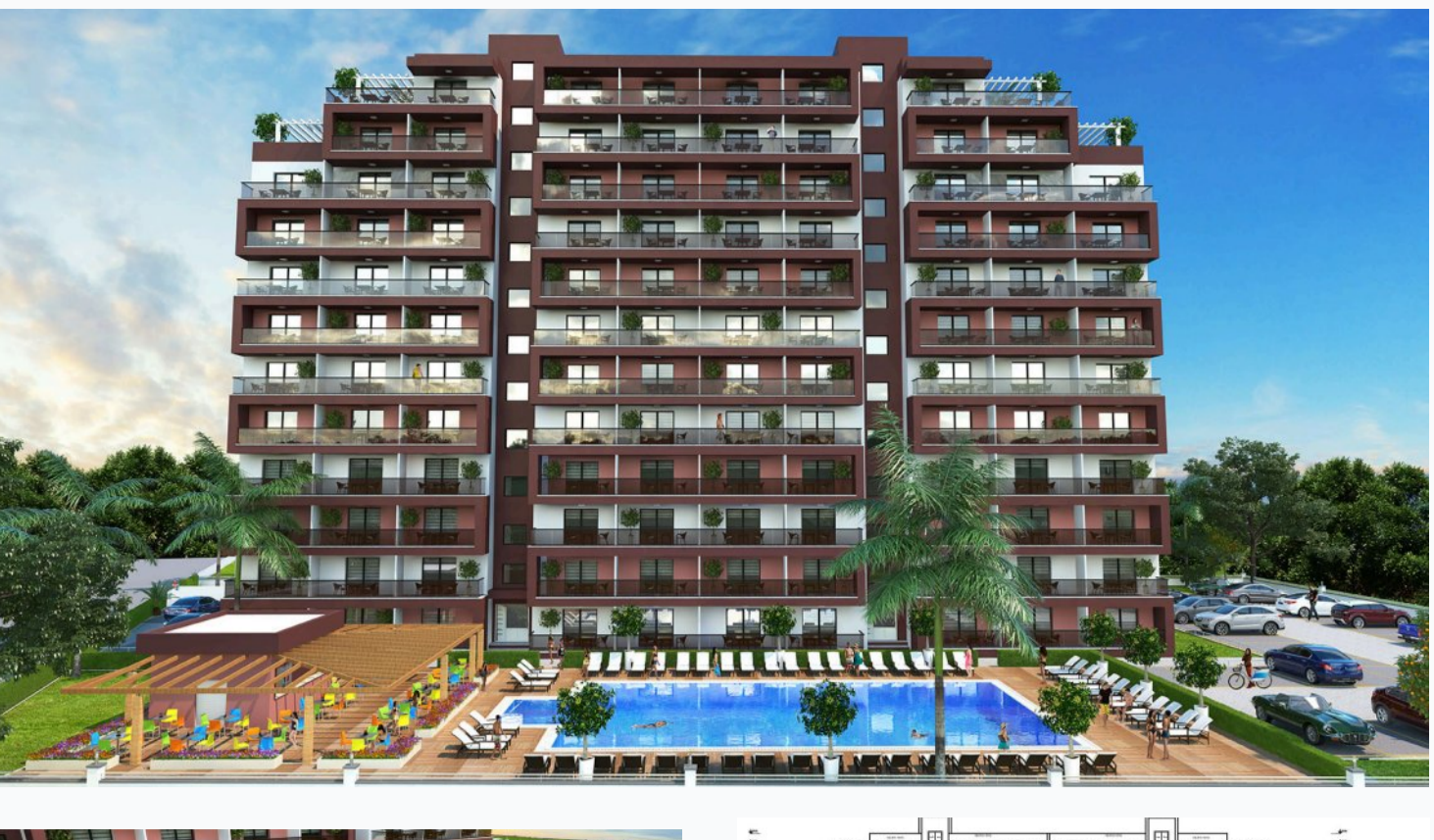
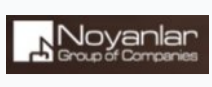


Sea Breeze residential complex

Location **Iskele, Long Beach**



About the project



Developer	Noyanlar
Start of sale	01.09.2023
Key handover	2025
Houses/blocks	1
Building floor	12 Min 12 Max
Units total	228 - Studio

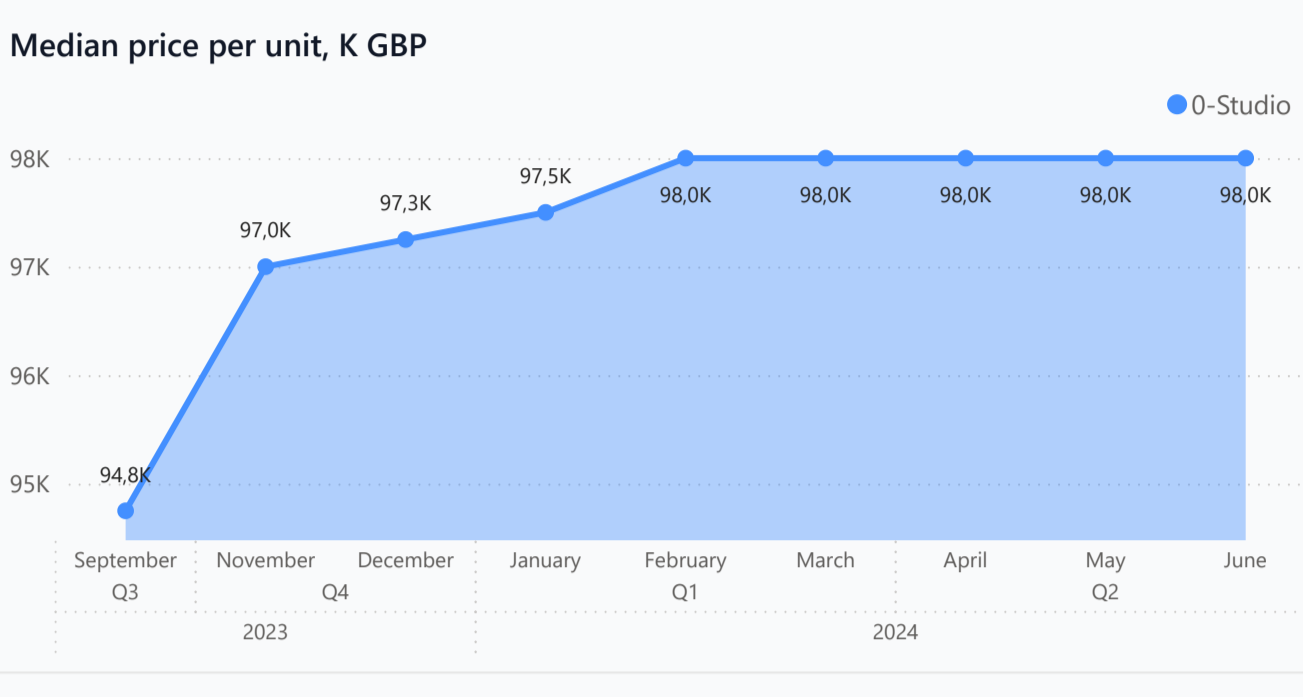
Distance to the sea - 800 m
 Distance to key locations:
 10 km by car to Famagusta, 5 km to Salamis Ancient City, 25 km to Ercan Airport, 30 km to Nicosia, 45 km to Larnaca Airport and only 5 km walking distance to Long Beach

Sea Breeze takes its name from nature, the sea and the warm Mediterranean climate of Cyprus. This magnificent housing project offers a unique living experience by combining the peaceful atmosphere, the green texture of nature and the cool breeze of the Mediterranean. The peaceful melody of the sea comes to life in Sea Breeze. When you wake up every morning, the stress of the day almost disappears with the fresh sea breeze coming from your windows. The specially designed landscape of the project opens the doors to a life integrated with nature.

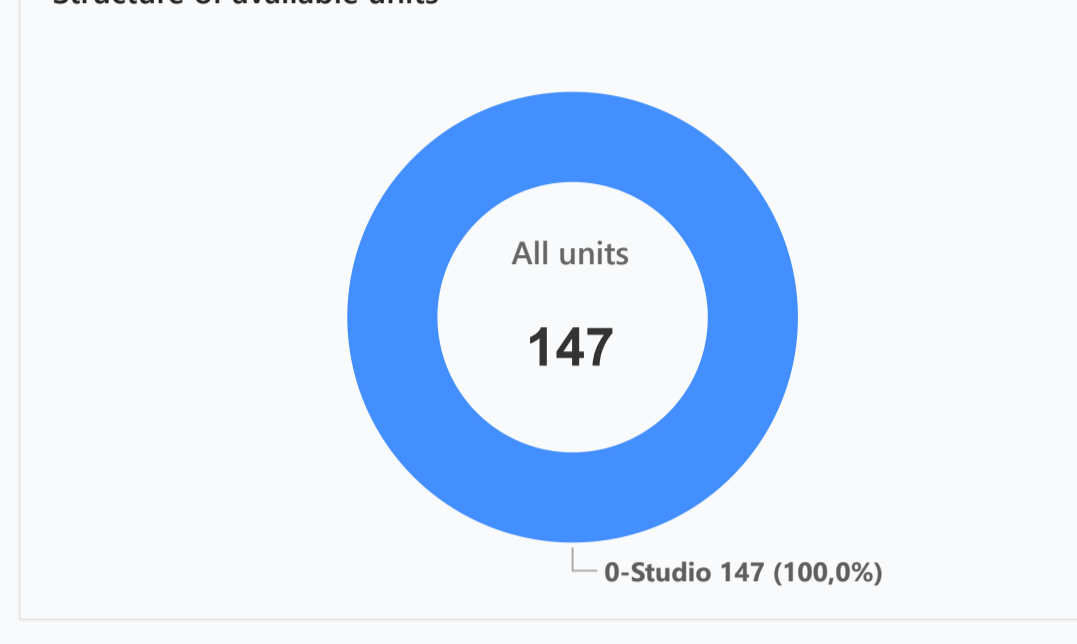
Complex infrastructure

- Bar ✔
- Beauty salon ✔
- Café ✔
- Closed territory ✔
- Fitness centre ✔
- Open pool ✔
- Parking ✔
- Restaurant ✔

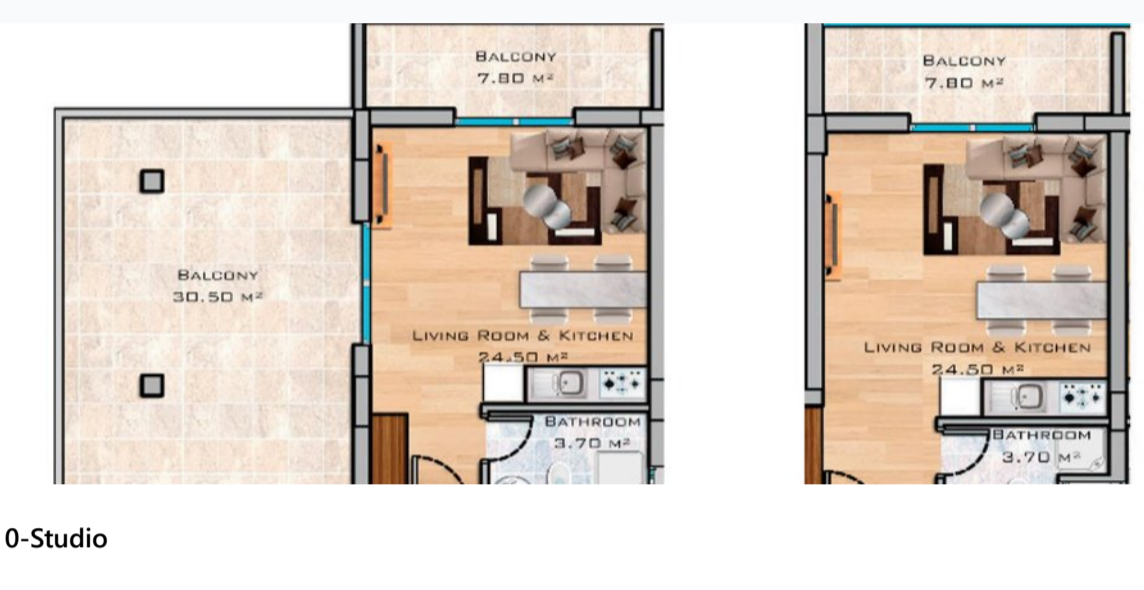
Available units **147** / 228 total



Structure of available units



Plans



0-Studio

Payment plans

Deposit (non-refundable) Min 1500 GBP for 15 days

Option	Down payment	Installments months	Discount	Offer
Option 1	30%	30% till key, 40...	-	-
Option 2	-	-	-	-
Option 3	-	-	-	-
Option 4	-	-	-	-

Special offer

Fully furnished design package

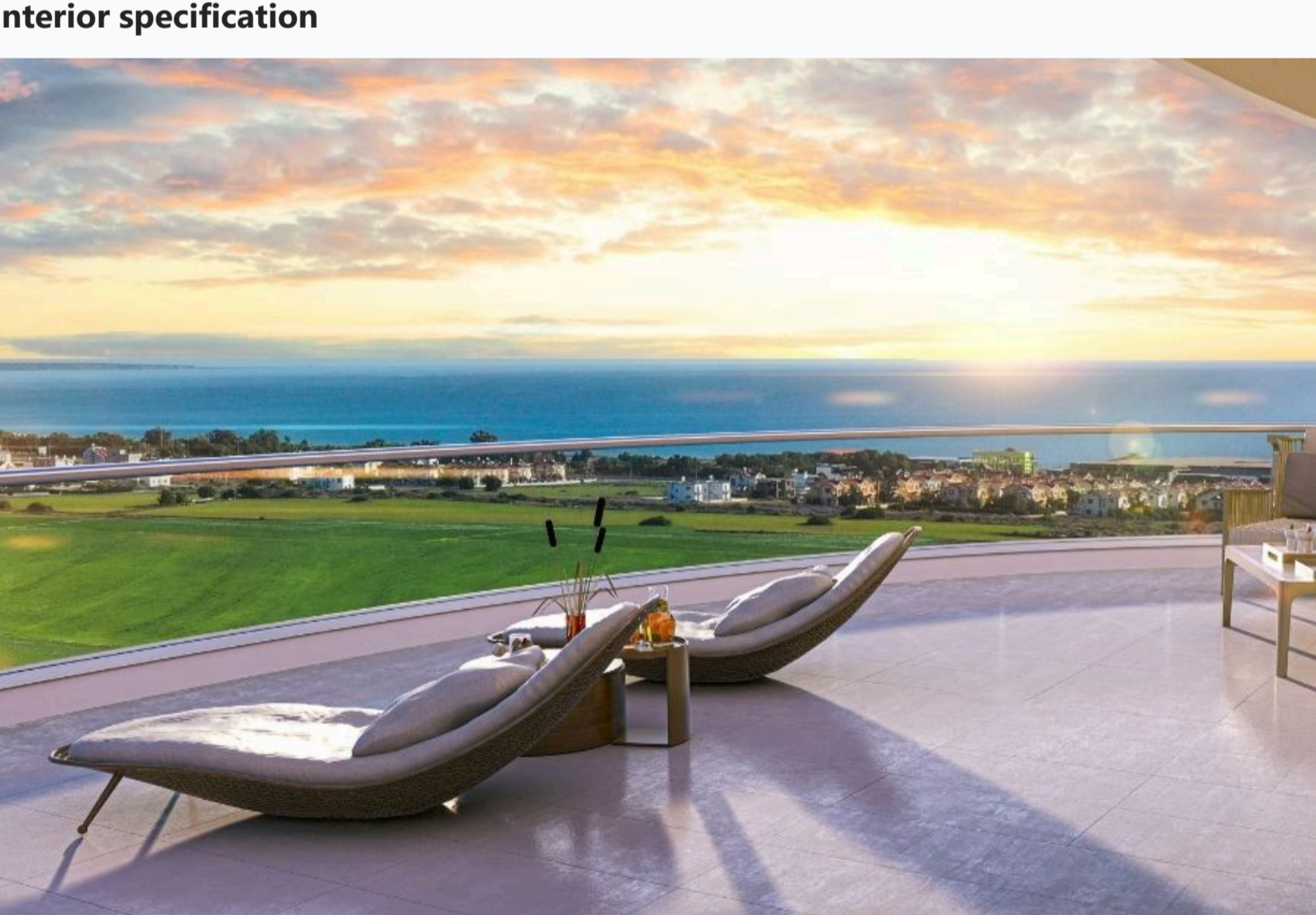
Rental guarantee

- Trafo 1800 GBP
- Resale -
- Maintenance fee 500-550 GBP annually
- Rental services -

Details

Bedrooms	Subtype	Block	Unit №	Floor	View	Bathroom	Internal area, sq. m	Balcony/Terrace, sq. m	Roof top terrace, sq. m	Garden, sq. m	Gross covered area, sq. m	Current price, GBP	Price per sqm, GBP
0-Studio	Flat	Sea Breeze	5	0		1	32	7			39	80 000	2 051
0-Studio	Flat	Sea Breeze	4	0		1	32	7			39	82 000	2 103
0-Studio	Flat	Sea Breeze	28	01		1	32	7			39	82 500	2 115
0-Studio	Flat	Sea Breeze	27	01		1	32	7			39	83 500	2 141
0-Studio	Flat	Sea Breeze	24	01		1	32	7			39	84 500	2 167
0-Studio	Flat	Sea Breeze	48	02		1	32	7			39	85 000	2 179
0-Studio	Flat	Sea Breeze	49	02		1	32	7			39	85 000	2 179
0-Studio	Flat	Sea Breeze	52	02		1	32	7			39	85 000	2 179
0-Studio	Flat	Sea Breeze	46	02		1	32	7			39	86 000	2 205
0-Studio	Flat	Sea Breeze	47	02		1	32	7			39	86 000	2 205
0-Studio	Flat	Sea Breeze	50	02		1	32	7			39	86 000	2 205
0-Studio	Flat	Sea Breeze	44	02		1	32	7			39	87 000	2 231
0-Studio	Flat	Sea Breeze	65	03		1	32	7			39	87 500	2 244
0-Studio	Flat	Sea Breeze	68	03		1	32	7			39	87 500	2 244
0-Studio	Flat	Sea Breeze	69	03		1	32	7			39	87 500	2 244
0-Studio	Flat	Sea Breeze	72	03		1	32	7			39	87 500	2 244
0-Studio	Flat	Sea Breeze	66	03		1	32	7			39	88 500	2 269
0-Studio	Flat	Sea Breeze	67	03		1	32	7			39	88 500	2 269
0-Studio	Flat	Sea Breeze	70	03		1	32	7			39	88 500	2 269
0-Studio	Flat	Sea Breeze	71	03		1	32	7			39	88 500	2 269
0-Studio	Flat	Sea Breeze	62	03		1	32	7			39	89 500	2 295
0-Studio	Flat	Sea Breeze	64	03		1	32	7			39	89 500	2 295
0-Studio	Flat	Sea Breeze	78	03		1	32	7			39	89 500	2 295
0-Studio	Flat	Sea Breeze	85	04		1	32	7			39	90 000	2 308
0-Studio	Flat	Sea Breeze	88	04		1	32	7			39	90 000	2 308
0-Studio	Flat	Sea Breeze	89	04		1	32	7			39	90 000	2 308
0-Studio	Flat	Sea Breeze	92	04		1	32	7			39	90 000	2 308
0-Studio	Flat	Sea Breeze	86	04		1	32	7			39	91 000	2 333

Interior specification



- #### Interior specification
- Ceramic flooring ✔
 - Double glazed windows ✔
 - Laminate flooring in the bedrooms ✔

Exterior specification



- #### Exterior specification
- Glass fence balcony ✔
 - Terracing with inbuilt lighting & power sockets ✔

Location of complex

